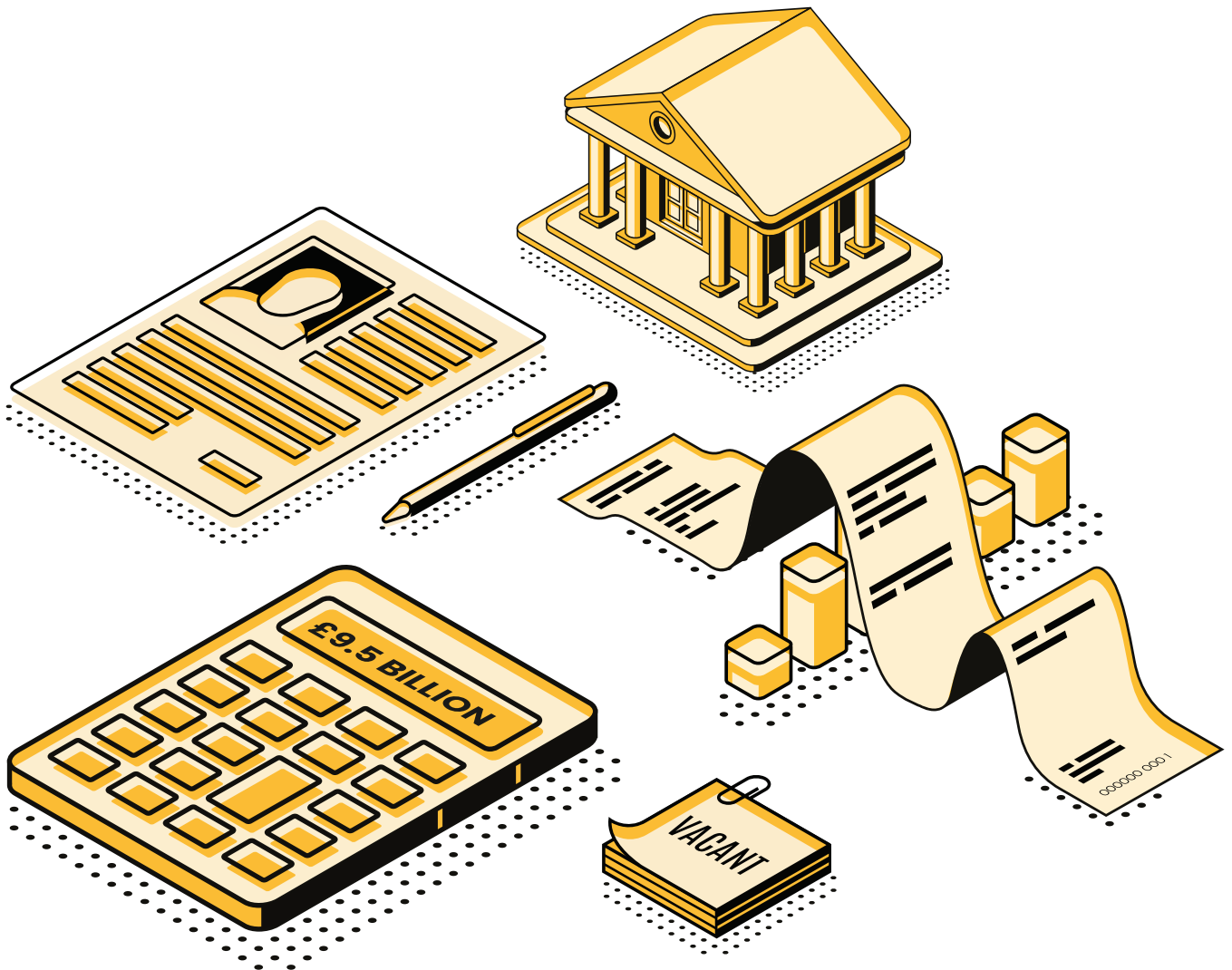


Measuring the Social and Economic Impact
of Sport in England

Summary:

Social and economic value of community sport and physical activity in England



This summary is based on work by the Sport Industry Research Centre at Sheffield Hallam University for Sport England.

Return on Investment

for community sport and physical activity in England

The social and economic value of being active

For every £1 spent on community sport and physical activity in England
£3.91 worth of impacts are generated...

Physical & mental health

150,000 cases

Heart disease and stroke prevented
Value: £1 billion

900,000 cases

Diabetes prevented
Value: £3.6 billion

8,500 cases

Cancer prevented
Value: £460 million

93,000 cases

Dementia prevented
Value: £3.5 billion

375,000 cases

Depression prevented
Value: £110 million

30,000,000

Fewer GP visits
Value: £450 million

33,000,000

Reduced use of psychotherapy services
Value: £670 million

21,000

Hip fractures prevented
Value: £800 million

1,500,000

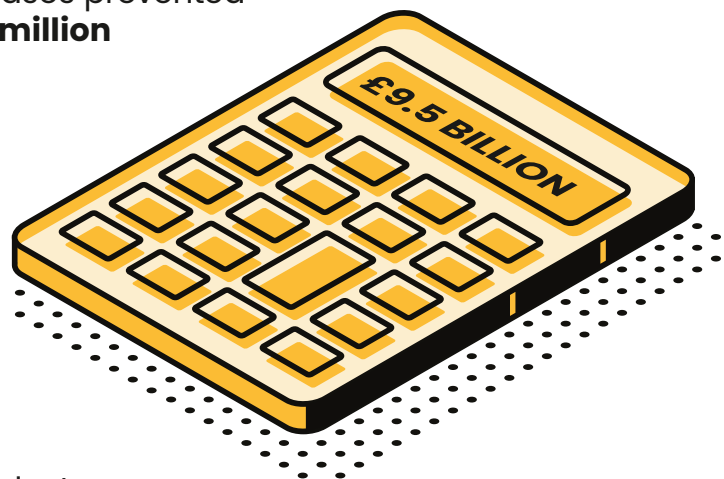
Back pain cases prevented
Value £410 million

280,000

Sports injuries caused
Cost -£1.5 billion

£9.5 billion

Physical & mental health impact generated



Results

Explore the Sport England / Sport Industry Research Centre (SIRC) at Sheffield Hallam University report, for more detail of the **£85.5 billion** social and economic impact of sport and physical activity in England.

Social Value

Physical & mental health	£9.5 billion
Mental wellbeing	£42 billion
Individual development	£282 million
Social & community dev.	£20 billion

Economic Value

Community sport-related economic activity £13.8 billion

Total Value

£85.5 billion

Return on Investment

for community sport and physical activity in England

The social and economic value of being active

For every £1 spent on community sport and physical activity in England
£3.91 worth of impacts are generated...

Mental wellbeing

Improved life satisfaction through participation for 24 million people

Value: £31.2 billion

Improved life satisfaction through volunteering for 3.9 million people

Value: £10.5 billion

£42 billion

Mental wellbeing impact generated

Individual development

Improved educational attainment

Value: £4.5 million

Increased earnings

Value: £277.5 million

£282 million

Individual development impact generated

Social & community development

10,000 fewer crime incidents

Value: £38.6 million

The replacement value of work by volunteers

Value: £5.7 billion

Enhanced social capital

Value: £14.2 billion

£20 billion

Social community development impact generated

Results

Explore the Sport England / Sport Industry Research Centre (SIRC) at Sheffield Hallam University report, for more detail of the **£85.5 billion** social and economic impact of sport and physical activity in England.

Social Value

Physical & mental health

£9.5 billion

• Mental wellbeing

£42 billion

• Individual development

£282 million

• Social & community dev.

£20 billion

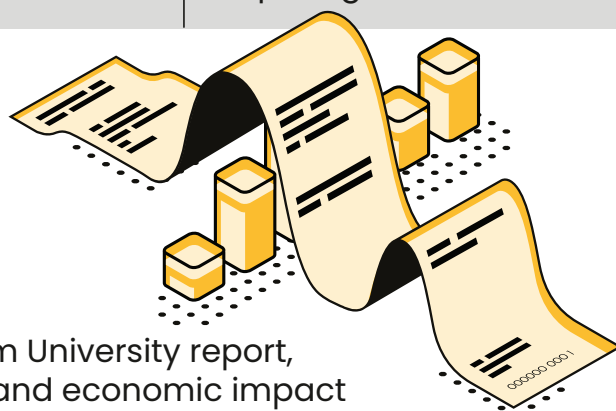
Economic Value

Community sport-related economic activity

£13.8 billion

Total Value

£85.5 billion



Return on Investment

for community sport and physical activity in England

The social and economic value of being active

For every £1 spent on community sport and physical activity in England
£3.91 worth of impacts are generated...

Employment

Community sport and physical activity supports **285,000 jobs** in England:

Commercial sector
139,000 jobs

Public sector
102,000 jobs

Voluntary / Third sector
45,000 jobs

285,000
jobs supported

Gross Value Added

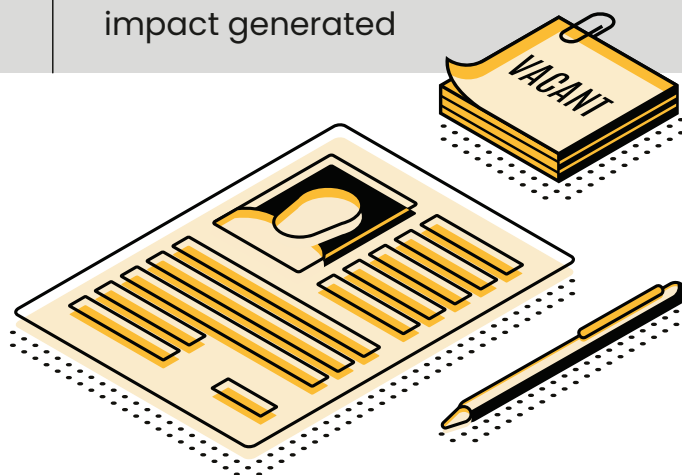
Community sport and physical activity contributes **£13.8 billion** to the economy annually in England:

Commercial sector
Value: £7.0 billion

Public sector
Value: £3.7 billion

Voluntary / Third sector
Value: £3.1 billion

£13.8 billion
impact generated



Results

Explore the Sport England / Sport Industry Research Centre (SIRC) at Sheffield Hallam University report, for more detail of the **£85.5 billion** social and economic impact of sport and physical activity in England.

Social Value

Physical & mental health	£9.5 billion
Mental wellbeing	£42 billion
Individual development	£282 million
Social & community dev.	£20 billion

Economic Value

- Community sport-related economic activity £13.8 billion

Total Value **£85.5 billion**